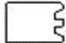


INSTALLATION DRAWINGS - HANKO 40 - CH043

marking			length	pcs	
extra	WALL LOG 40x146	<i>extra</i>	4120	1	
001	WALL LOG 40x146		4120	2	
002	WALL LOG 40x146		3920	16	
002A	WALL LOG 40x146		3920	2	
003	WALL LOG 40x146		2512	14	
004	WALL LOG 40x146	<i>includes 1 pcs extra</i>	2280	31	
004V1	WALL LOG 40x146		2280	1	
004V2	WALL LOG 40x146		2280	1	
004B	WALL LOG 40x146		2280	6	
005	WALL LOG 40x146		840	26	
005B	WALL LOG 40x146		840	3	
006	WALL LOG 40x146		672	14	
	HAMMER BLOCK			2	
KL-1	ROOF BOARD 40x146		2837	33	
KL-2	ROOF BOARD 40x146		2837	1	
AR-1	45x95 FLOOR FRAME		3710	1	
AR-2	45x95 FLOOR FRAME		3710	1	
AR-3	45x70 FLOOR FRAME		1980	1	
AR-4	45x95 FLOOR FRAME		1980	1	
AR-5	45x95 FLOOR FRAME		1980	12	
PL-1	28x120 FLOOR BOARD (FRONT ROOM)		1796	21	
PL-2	28x120 FLOOR BOARD (SAUNA ROOM)		1765	21	
SR-1	45x145 RAFTER		4120	2	
SR-2	45x45 ROOF EDGE SUPPORT		4120	2	
PP-1	18x45 FLOOR MOULDINGS	cut to length!	~2,1	10	
RL-1	18x95 ROOF EDGE BOARD (FRONT, BACK)	cut to length!	~4,2	2	
RL-2	18x95 ROOF EDGE BOARD (SIDES)	cut to length!	~3,0	2	

UK-1	18x95 DOOR MOULDINGS	vertical	1890	4	
UK-2	18x95 DOOR MOULDINGS	horizontal	890	1	
UK-3	18x95 DOOR MOULDINGS	horizontal	790	1	
UK-4	18x60 DOOR MOULDINGS	horizontal	660	1	
UK-5	18x60 DOOR MOULDINGS	horizontal	560	1	
UK-6	45x45 DOOR FRAME MOULDING		1950	4	
UK-7	45x45 DOOR FRAME MOULDING		690	2	
UK-8	45x45 DOOR FRAME MOULDING		590	2	
UK-9	18x40 DOOR FRAME SUPPORT	for outside door	1860	2	
AK-1	18x95 WINDOW MOULDINGS		1310	2	
AK-2	18x95 WINDOW MOULDINGS		1060	2	
AK-3	18x95 WINDOW MOULDINGS		620	4	
	WINDOW 1100x535			1	
	DOOR 690x1860 BRONZE, WOODEN FRAME			1	
	DOOR 590x1860 BRONZE, FULL GLASS			1	
	SAUNA HEATER STOVEMAN 13R			1	
	HEATER STONES 20 KG			4	
	PROTECTION WALLS FOR HEATER			1	
	PROTECTION SHEET FOR FLOOR			1	
	HEATER BASE METAL			1	
	CHIMNEY SET			1	
	CHIMNEY EXTENSION 1000 MM + CLAMP			1	
RN-1	WATER DRAINAGE		1995	1	
	BENCH SET (5 BENCHES + SUPPORTS)			1	
	VENTILATION LOUVER WOOD D100			2	
	VENTILATION GRID METAL D100			2	
	3 MM DETAIL FOR FLOOR SLOPE		1995	1	
	6 MM DETAIL FOR FLOOR SLOPE		1995	1	
	9 MM DETAIL FOR FLOOR SLOPE		1995	1	
	12 MM DETAIL FOR FLOOR SLOPE		1995	1	

	ROOF COVERING BASE LAYER			2	
	ROOF SHINGLE (TOP LAYER)			5	
	STARTING PIECES FOR ROOF COVERING			5 tk	
	END PIECES FOR ROOF COVERING			5 tk	
	SCREW 3,5x40 STAINLESS FOR MOULDINGS			250	
	SCREW 4,8x90 STAINLESS FOR CONNECTION WALL LOGS			400	
	SCREW 4,2x55 (BROWN) FOR FLOOR BOARDS			400	
	SCREW 4,5x80 FOR ROOF BOARDS			400	
	SCREW 4,5x70 FOR ROOF EDGE BOARDS AND BENCH SUPPORTS			200	
	SCREW 5,0x90 FOR FLOOR FRAME AND WALL CONNECTIONS			200	
	SCREW 6x180 FOR RAFTERS AND WALL CONNECTIONS			30	
	SCREW 4,8x38 WITH RUBBER FOR CHIMNEY			50	
	NAIL FOR ROOF SHINGLE			1	

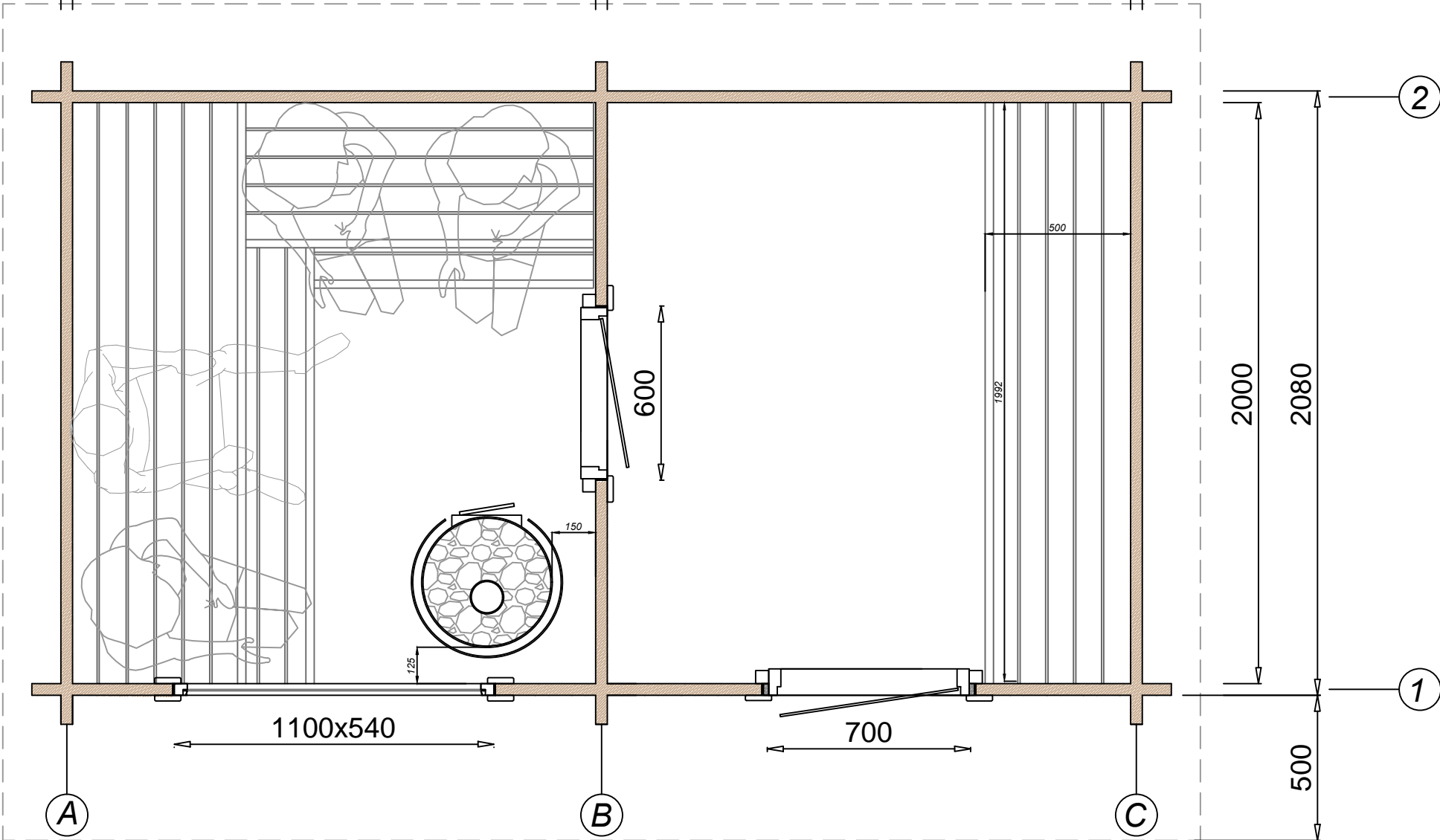
		<i>extra</i>	<i>1 pcs</i>						
		<i>001</i>	<i>2 pcs</i>						
		<i>002</i>	<i>16 pcs</i>						
		<i>002A</i>	<i>2 pcs</i>				<i>FIRST ROW</i>		
		<i>003</i>	<i>14 pcs</i>						
		<i>004</i>	<i>31 pcs</i>						
		<i>004v1</i>	<i>1 pcs</i>				<i>005</i>	<i>26 pcs</i>	
		<i>004v2</i>	<i>1 pcs</i>				<i>005B</i>	<i>3 pcs</i>	
		<i>004B</i>	<i>6 pcs</i>				<i>006</i>	<i>14 pcs</i>	

Hanko40

3720

1800

1800



2

1

A

B

C

1100x540

700

600

2000

2080

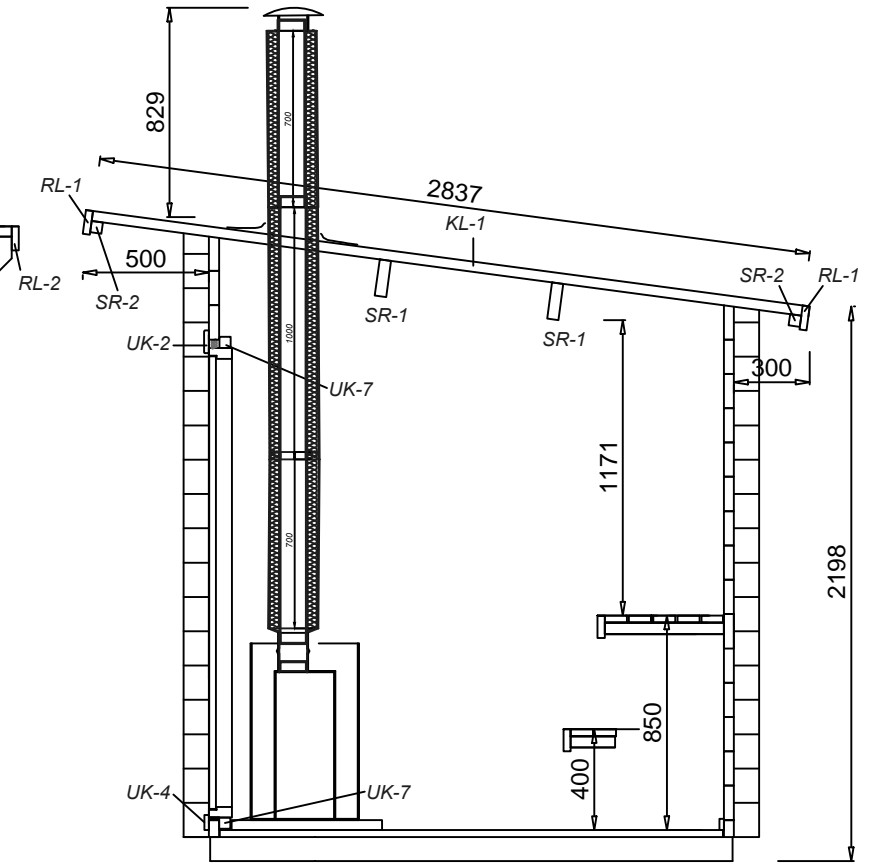
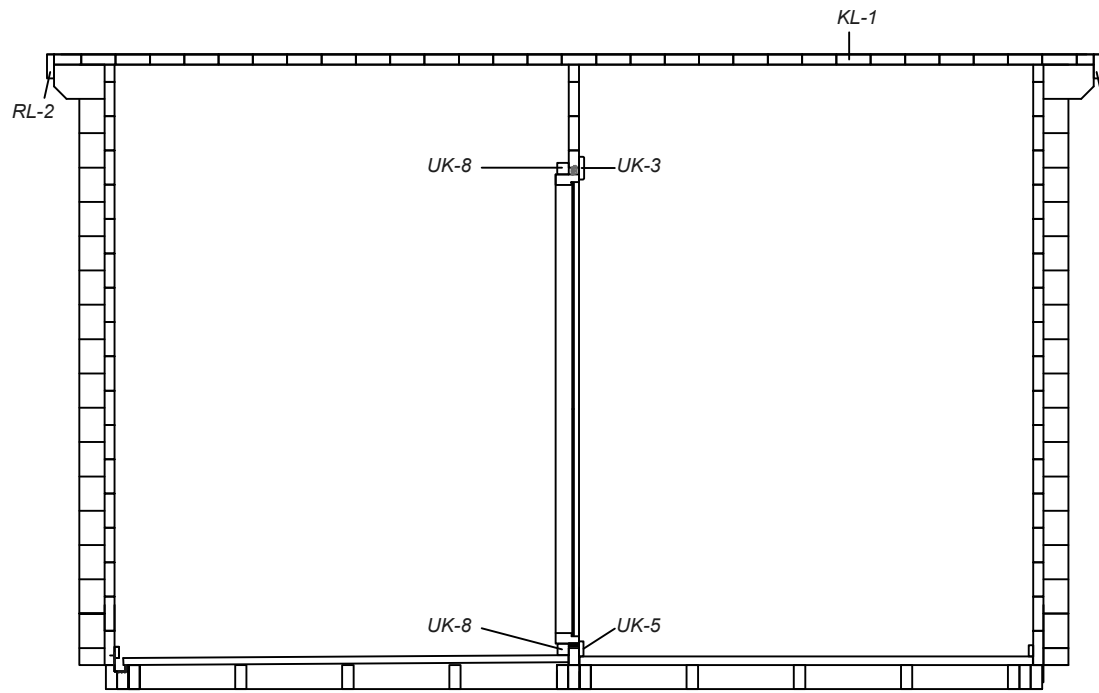
500

1992

500

150

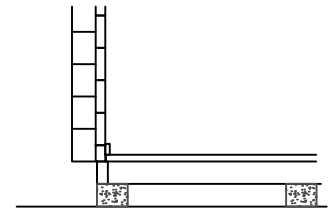
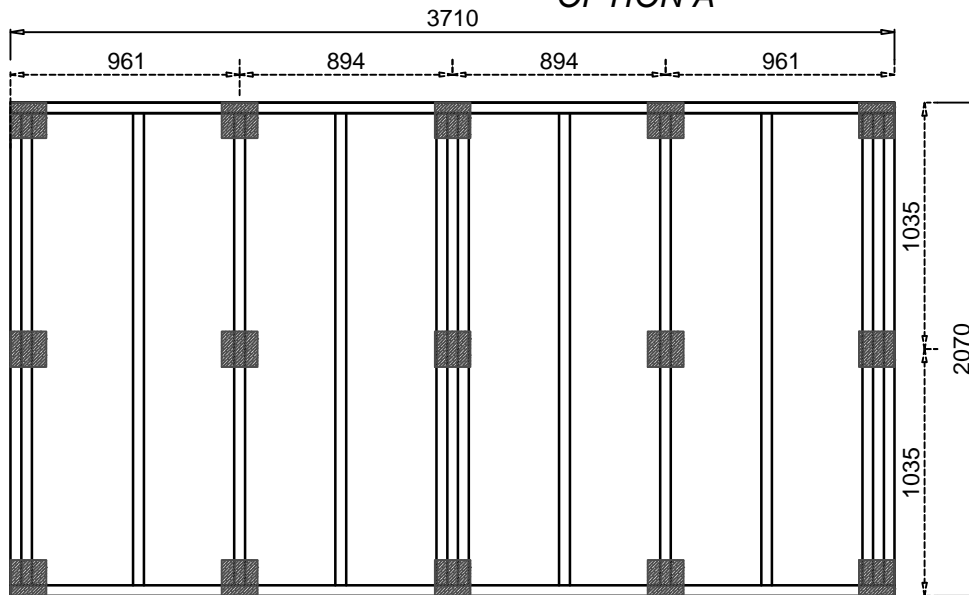
125



Hanko40

BASEMENT POSITIONING

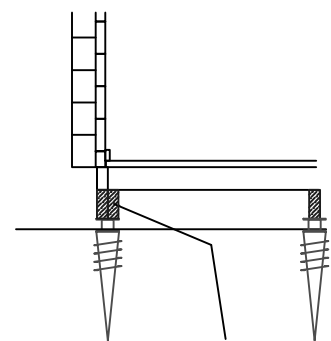
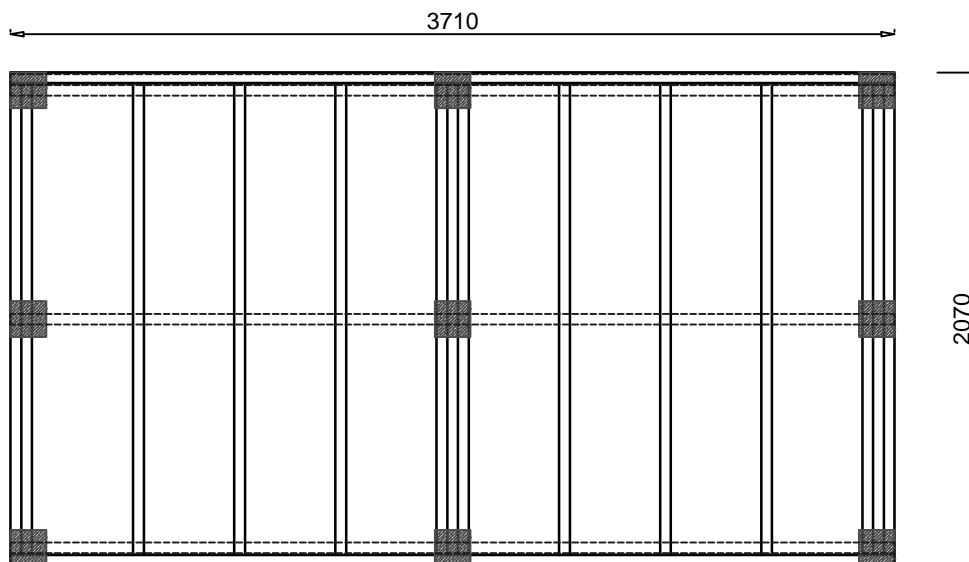
OPTION A



PLACE THE BITUMEN LAYER
BETWEEN THE
WOOD AND CONCRETE TO
PROTECT FROM
MOISTURE

OPTION B

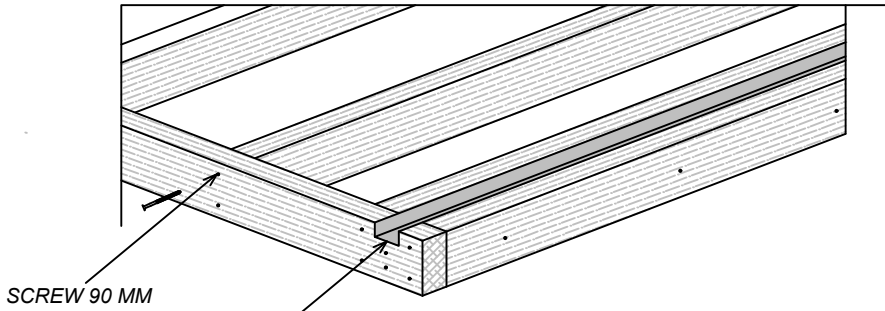
WHEN USING AN EXTRA BEAMS UNDER THE FLOOR FRAME -
AMOUNT OF SUPPORTS CAN BE REDUCED
(NOT INCLUDED WITH DELIVERY KIT)



EXTRA BEAMS
45x95 IMPEGRATED
(NOT INCLUDED IN
STANDARD DELIVERY KIT)

NOT INCLUDED IN DELIVERY SET:

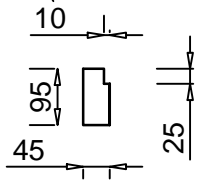
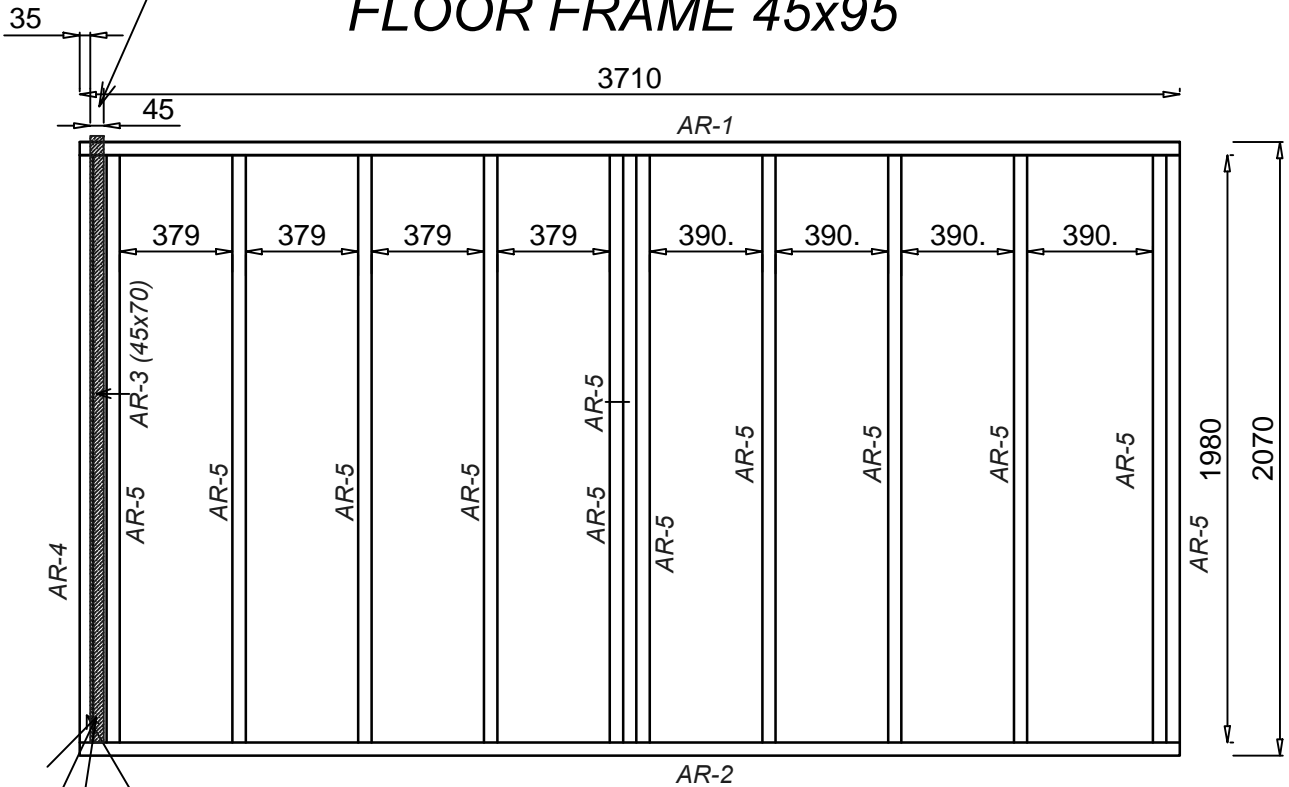
METAL FOUNDATION SCREWS
CONCRETE BLOCKS
EXTRA BEAMS UNDER THE FLOOR FRAME



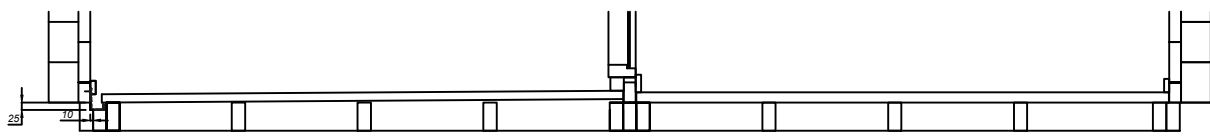
SCREW 90 MM

CUT THE 45x25 MM
CUTOUT FOR
WATER DRAINAGE

FLOOR FRAME 45x95

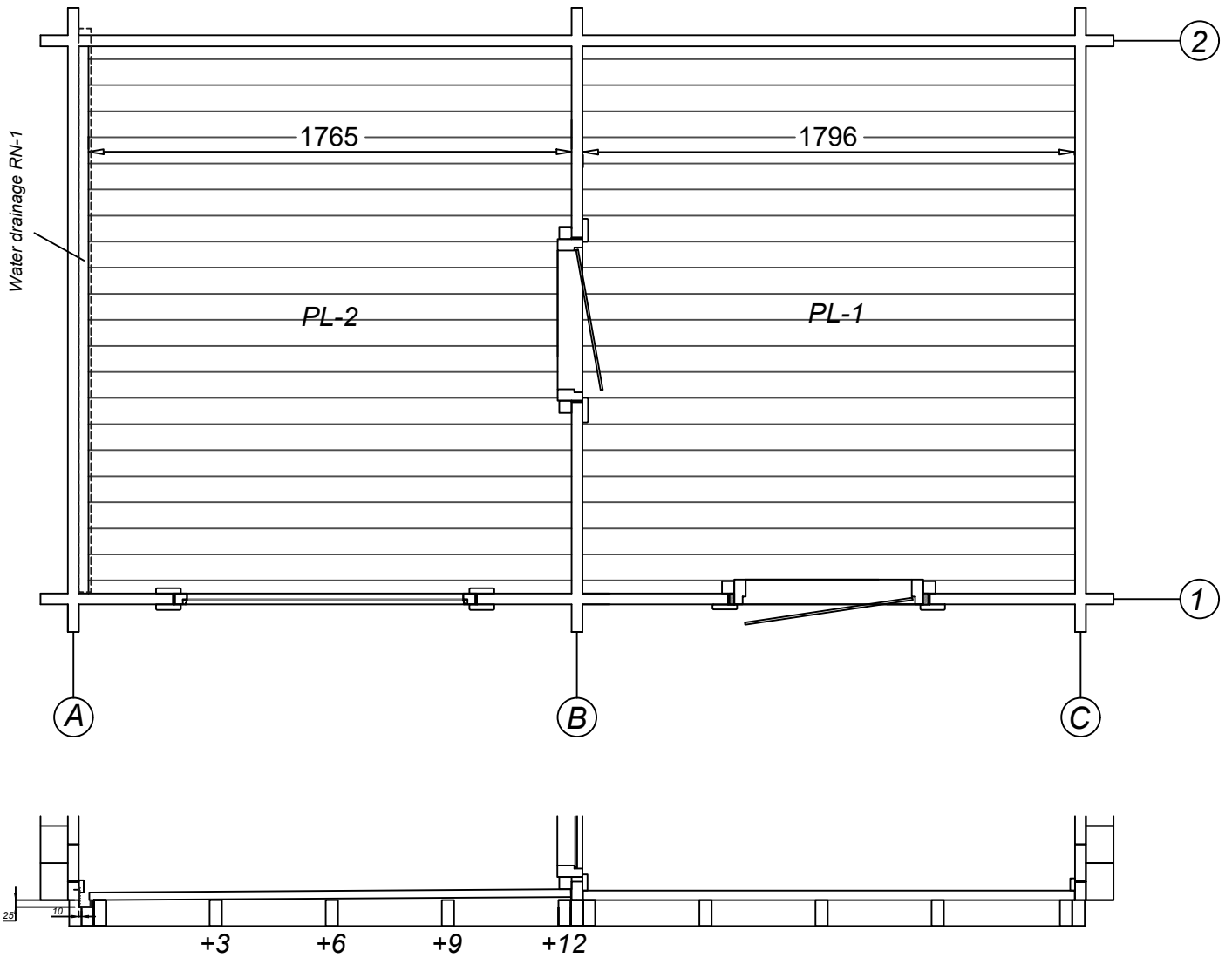


AR-4 DETAIL MUST HAVE CUTOUT 10x25 MM

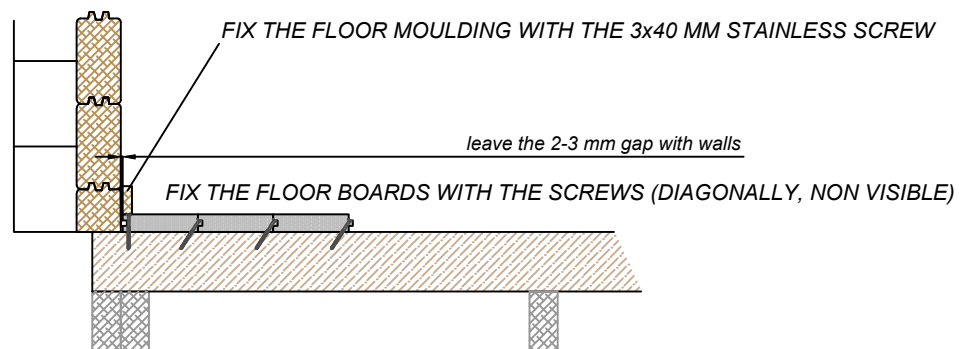


WATER DRAINAGE DETAIL

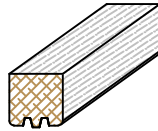
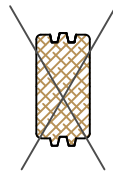
FLOOR BOARDS



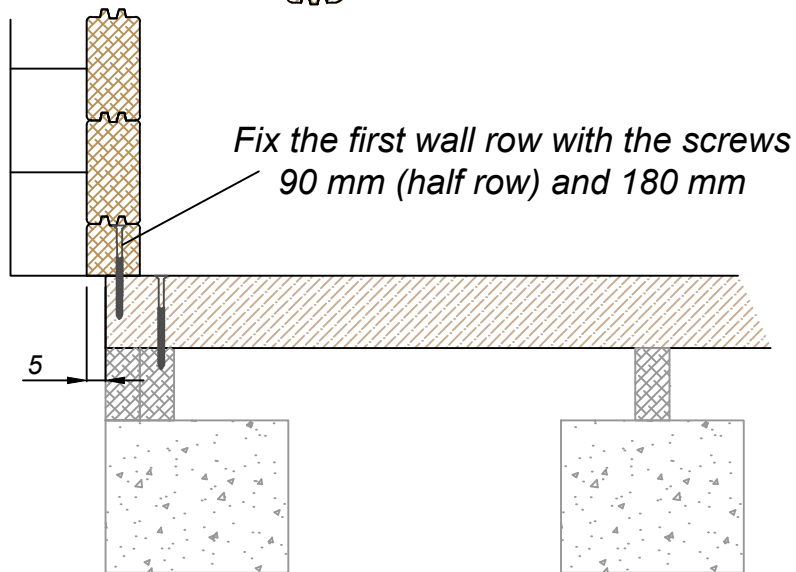
BEFORE THE FLOOR BOARD, INSTALL FLOOR SLOPE DETAILS



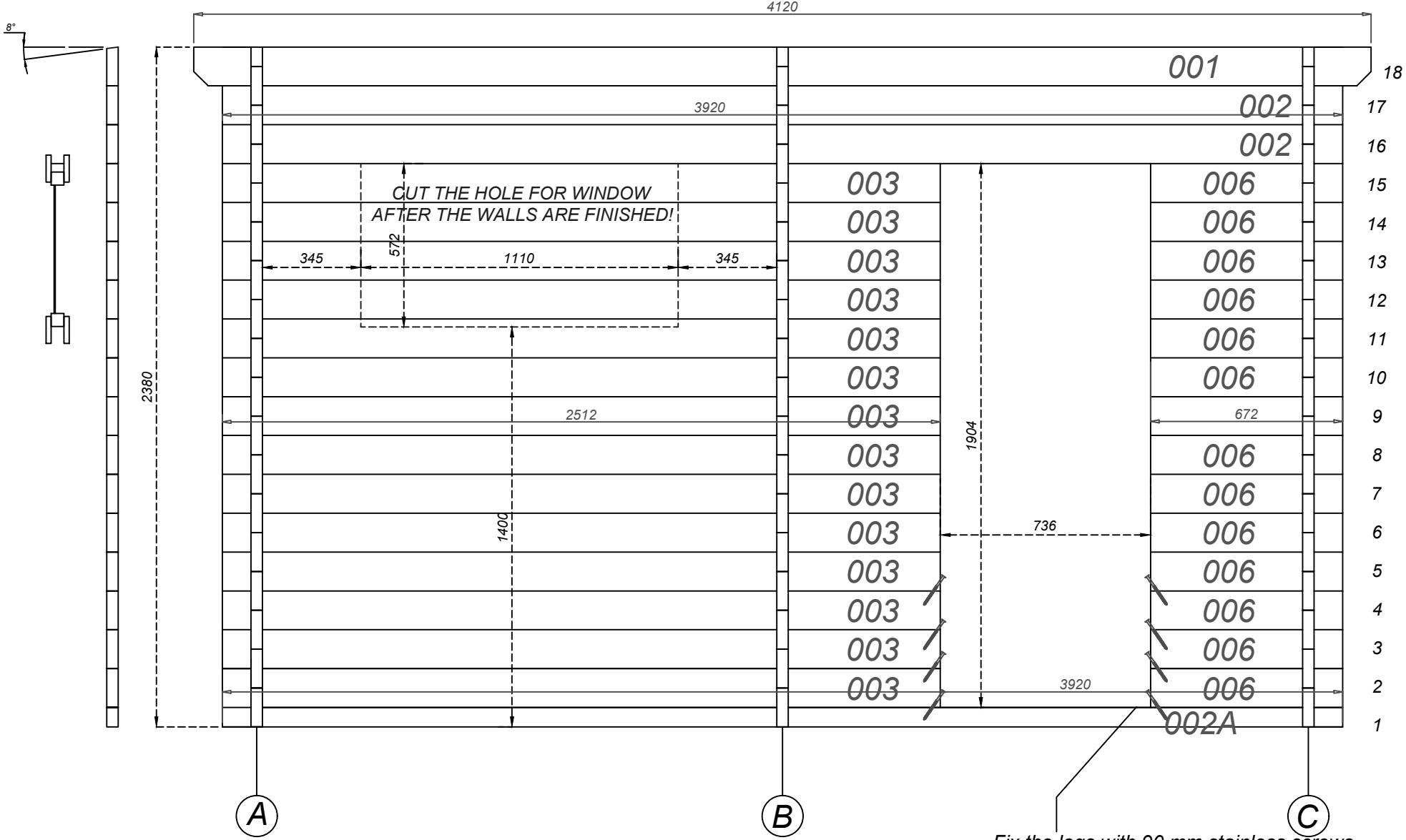
FIRST ROW



Use rubber hammer and hammer block

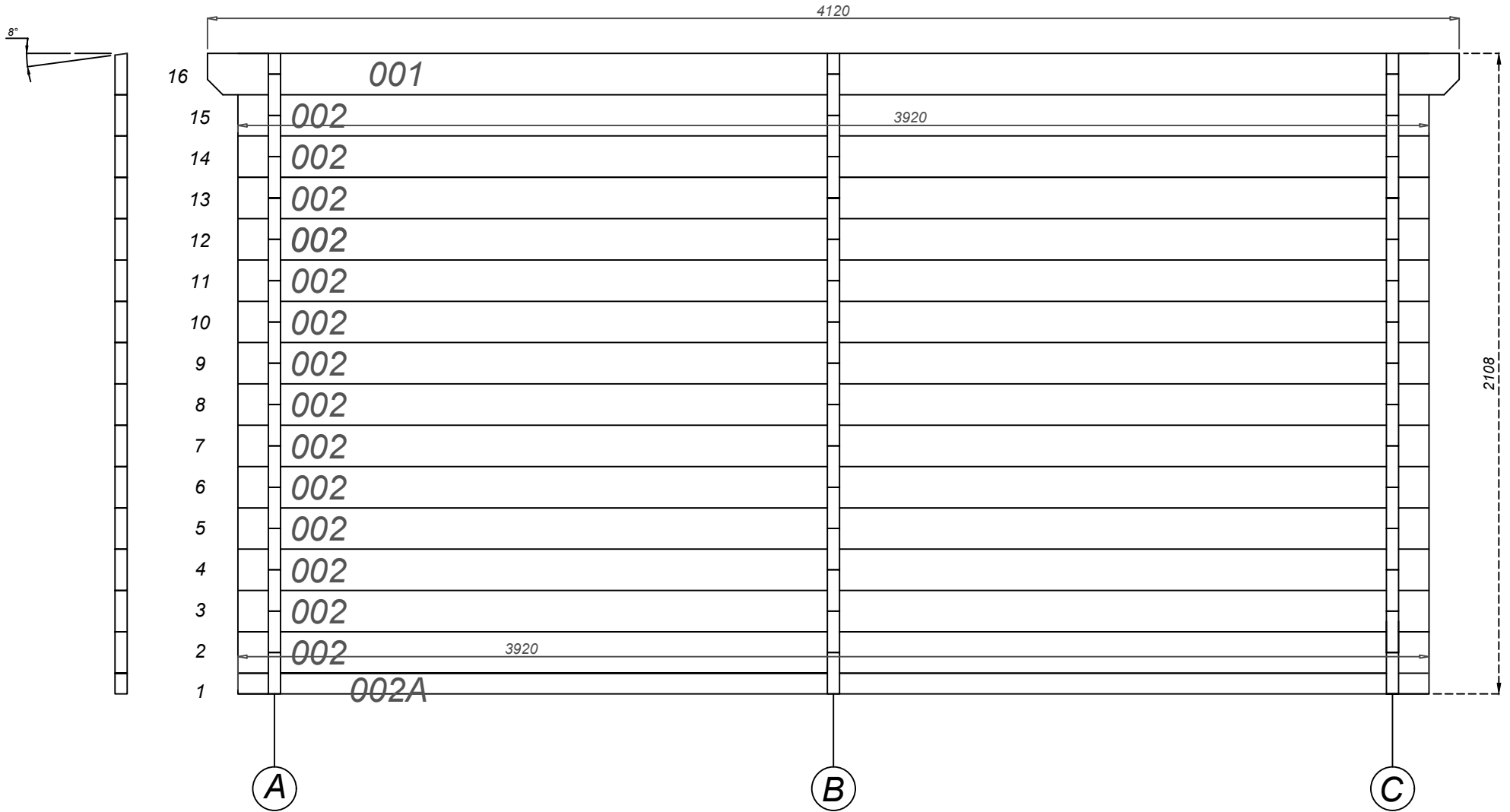


WALL 1

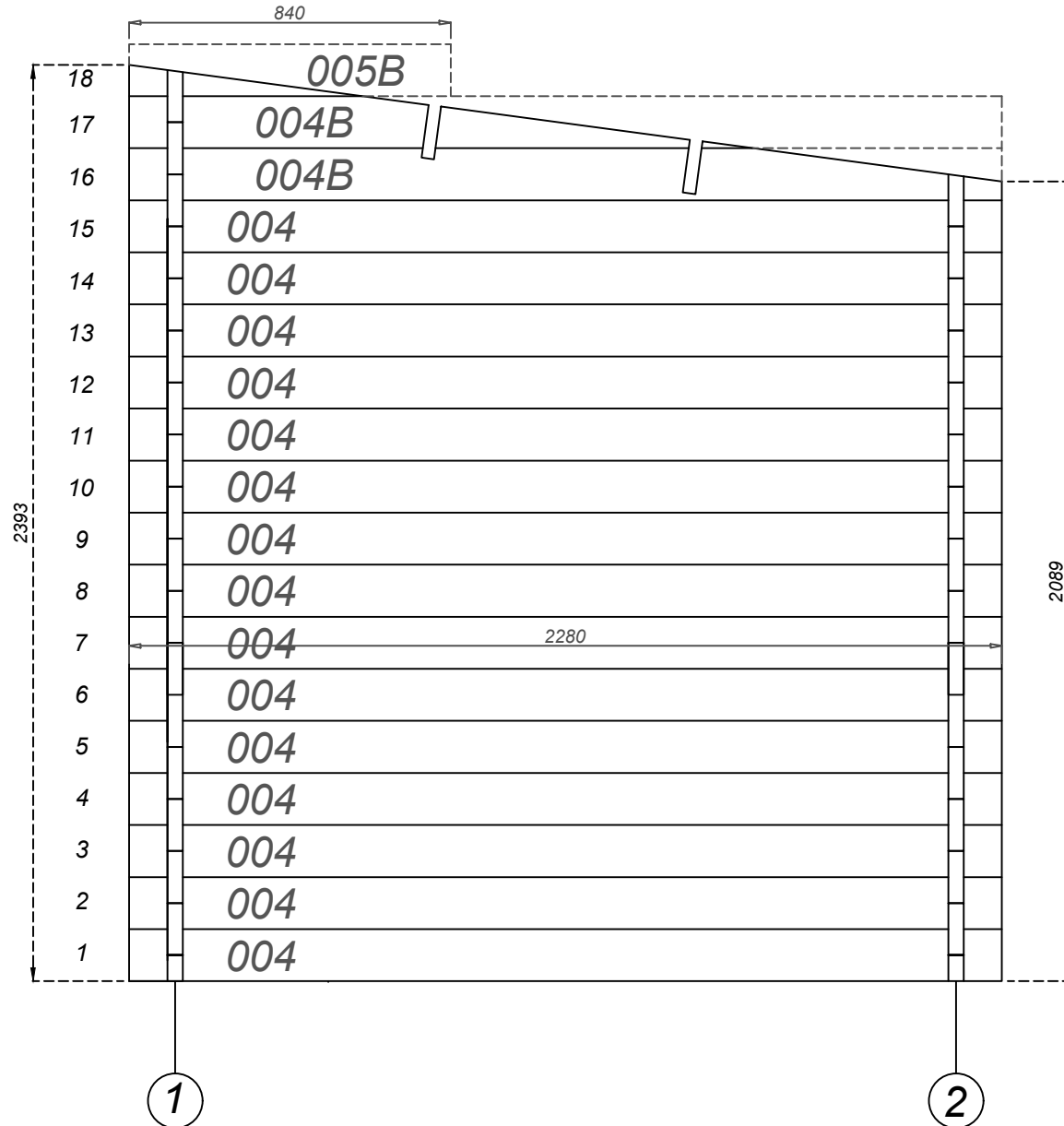


Fix the logs with 90 mm stainless screws

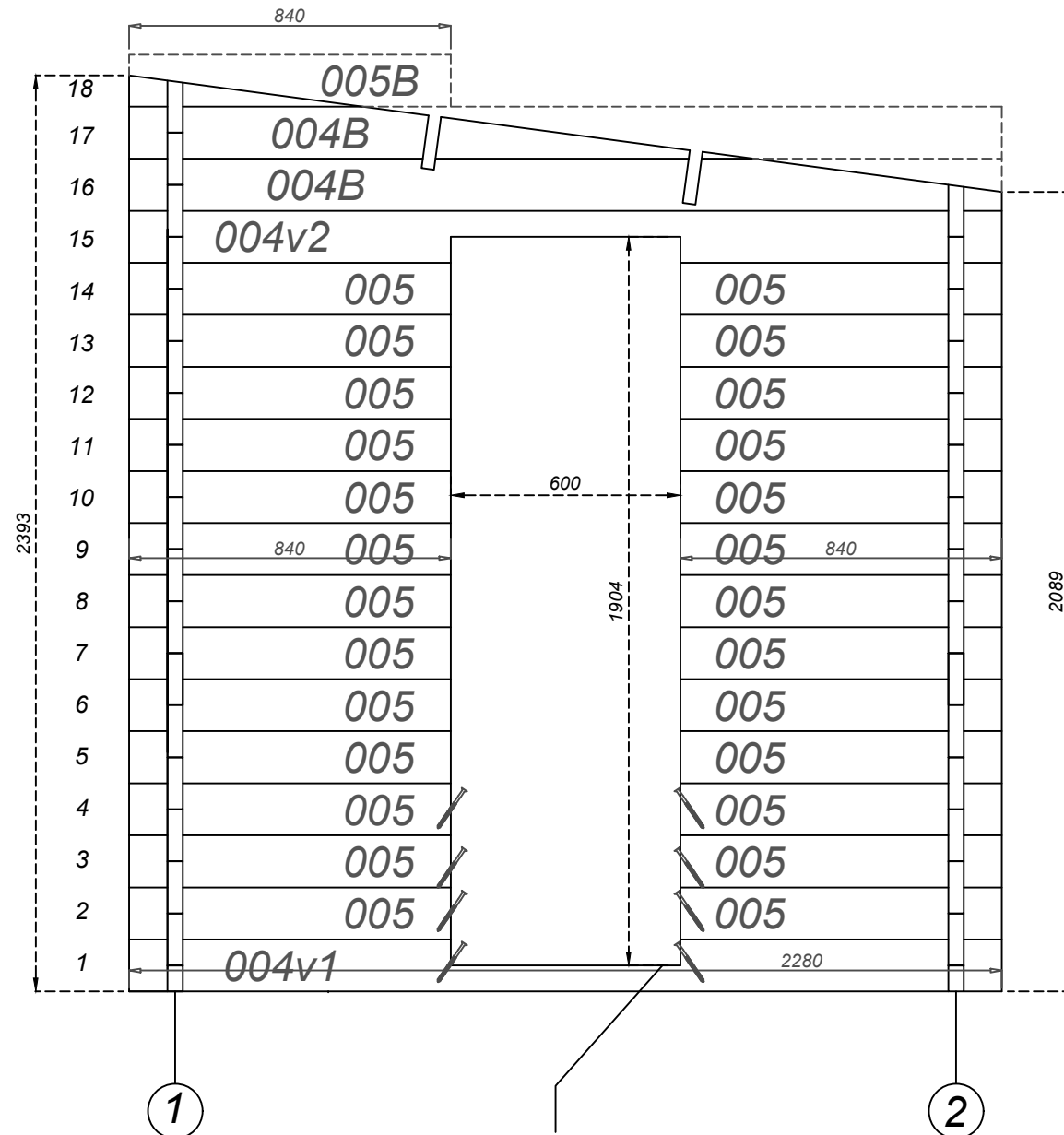
WALL 2



WALL A & C

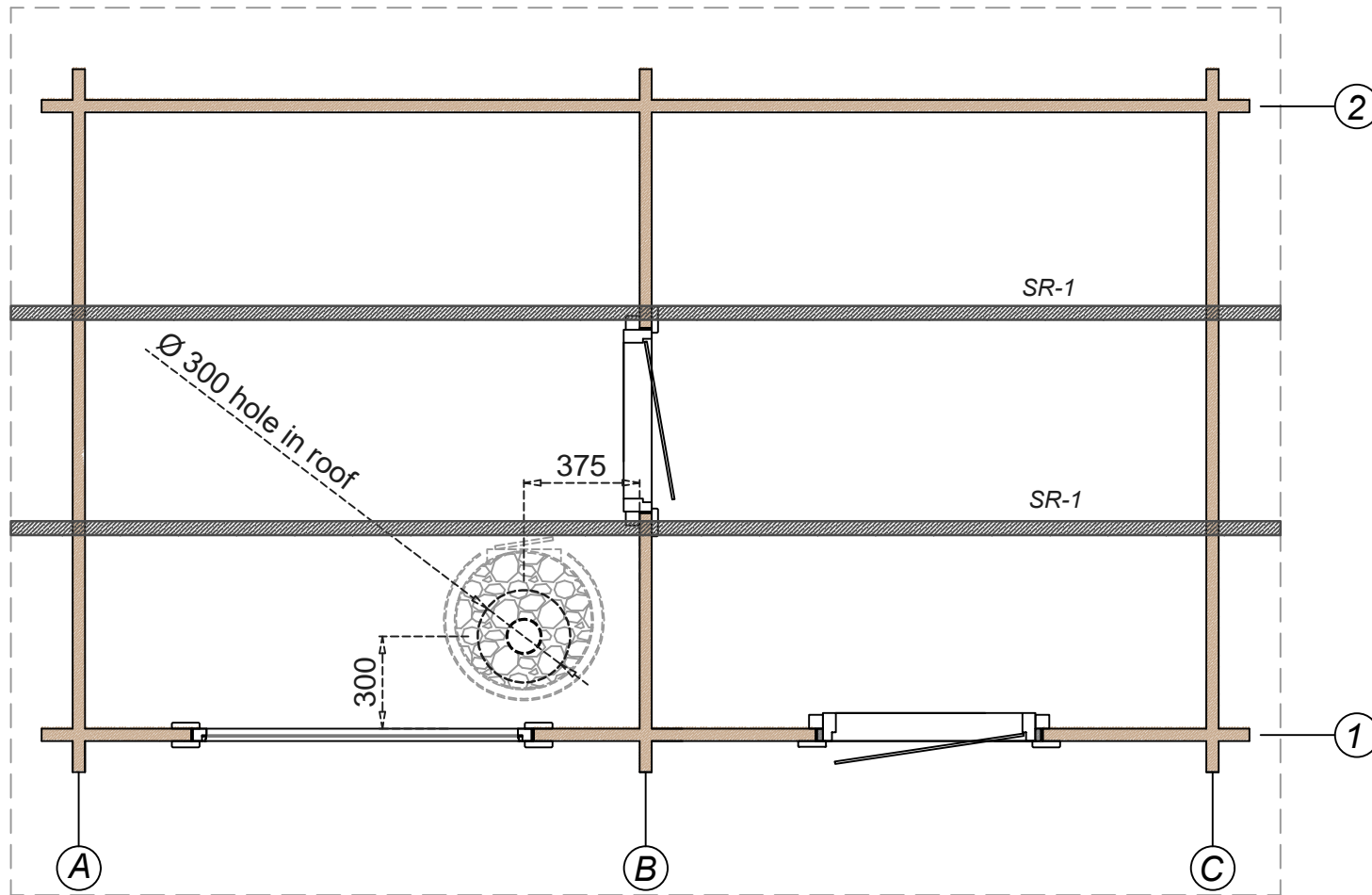


WALL B

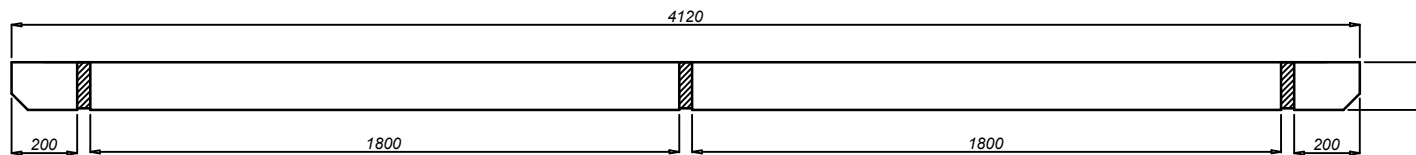


Fix the logs with 90 mm stainless screws

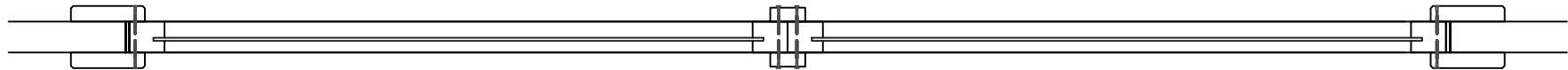
ROOF RAFTERS POSITIONING AND HOLE FOR CHIMNEY



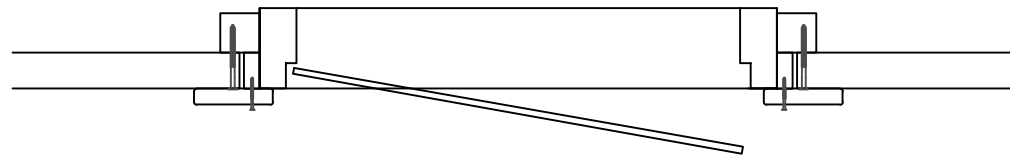
ROOF RAFTER SR-1
45x145 mm - 2 pcs



FIX THE WINDOWS TO THE WALL WITH THE MOULDINGS,
USING THE 40 MM STAINLESS SCREWS

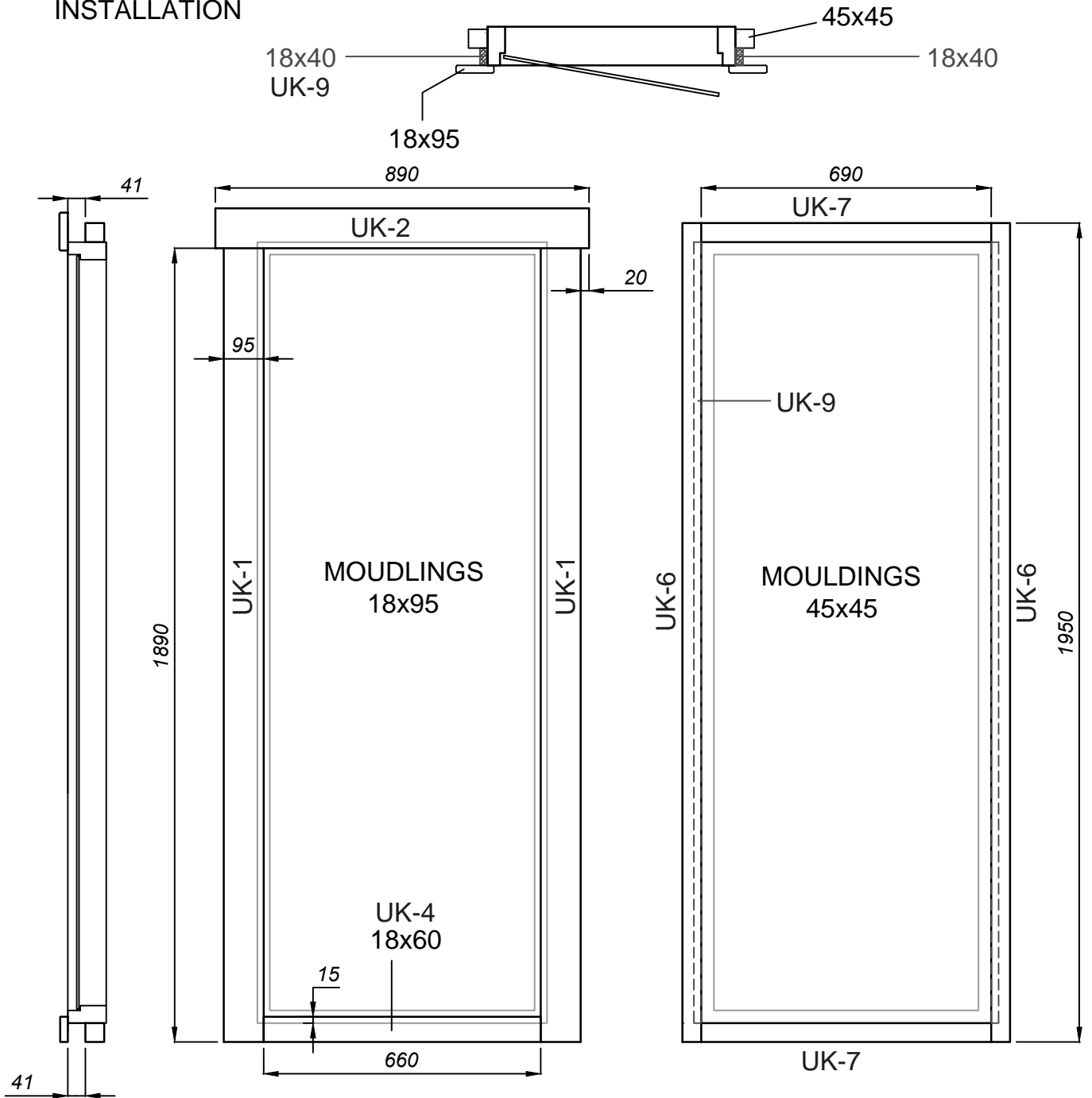


FIX THE WINDOWS TO THE WALL WITH THE 55 MM STAINLESS SCREWS
FIX THE MOULDINGS USING THE 40 MM STAINLESS SCREWS



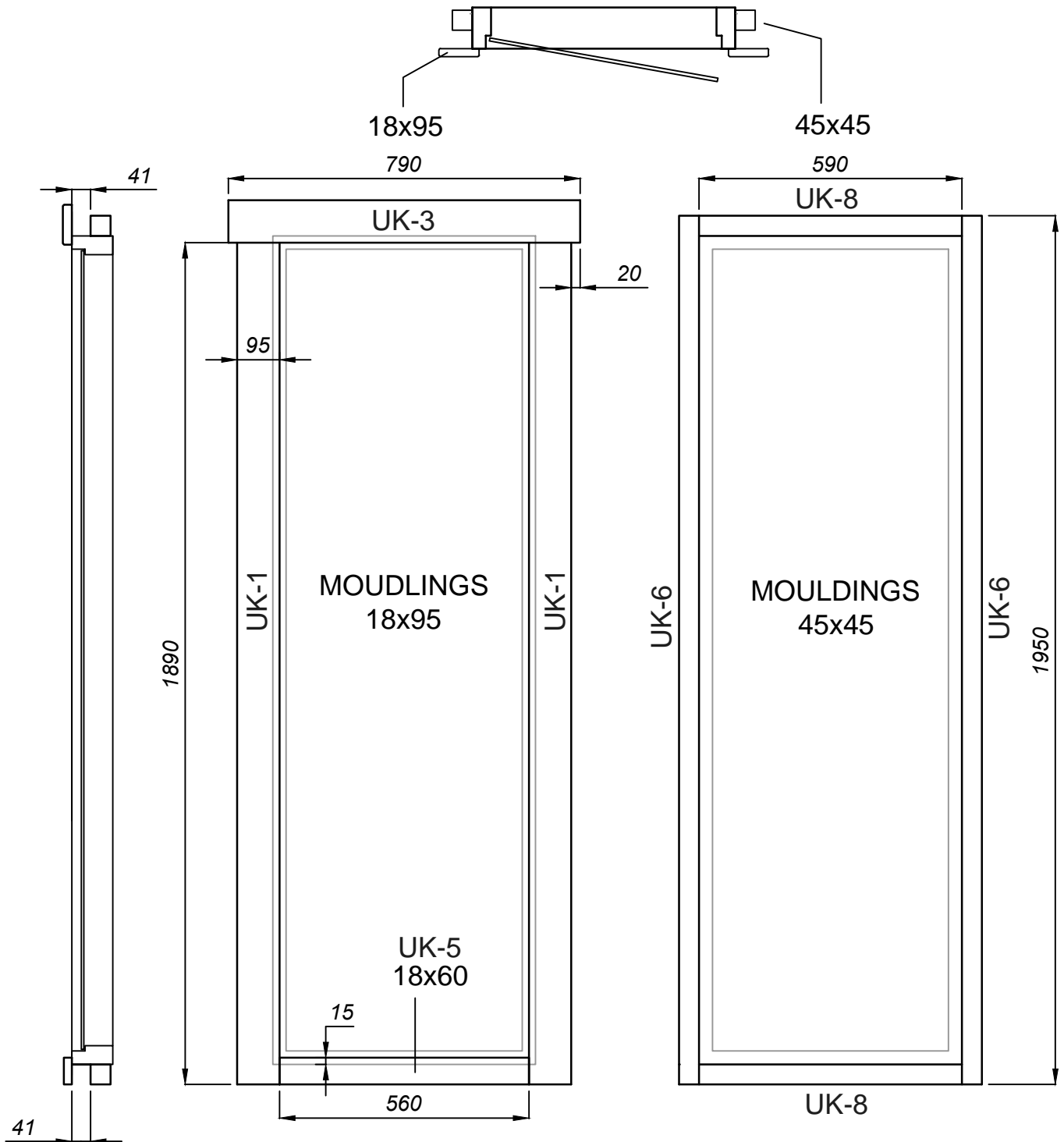
DOOR MOULDINGS (OUTSIDE DOOR)

UK-9 DETAILS FOR
BETTER MOULDING
INSTALLATION



USE STAINLESS SCREWS 3x40 MM FOR FIXING THE SCREWS

DOOR MOULDINGS (GLASS DOOR)



USE STAINLESS SCREWS 3x40 MM FOR FIXING THE SCREWS

WINDOW MOULDINGS

